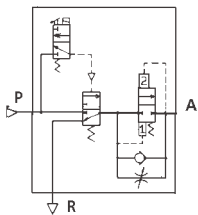


SOFT START-UP VALVE SERIES (N)AV 2000, 3000, 4000 1/4, 3/8, 1/2"

- ✓ Combined Soft Start and Dump Valve
- ✓ Compatible with Modular Series FRL
- ✓ Large Cv Factor
- ✓ Low Power
- ✓ Air Supply and Exhaust can be operated manually

SYMBOLS



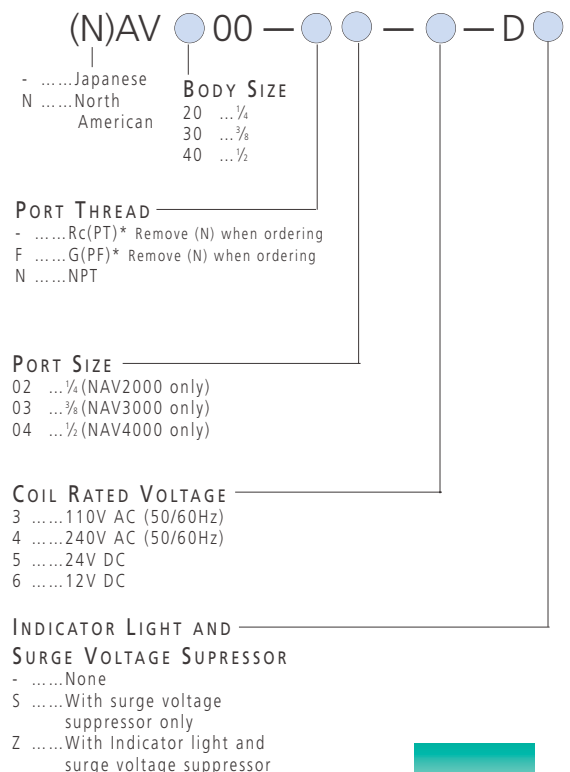
The NAV valve pictured together with an NAW series Filter/Regulator and an NAN series Silencer. (To order these items, see Air Preparation section {NAW} and Valves section {NAN})

TECHNICAL SPECIFICATIONS

Model		NAV2000	NAV3000	NAV4000	
Port Size		1/4	3/8	1/2	
Proof Pressure		1.5MPa / 220PSI			
Operating Pressure Range		1MPa / 145PSI			
Pressure Gauge Port Size		1/8			
Ambient and Fluid Temperature		0 ~ 60°C* / 32~140°F			
CV Factor	P→A	1.19	2.20	3.60	
	A→R	1.39	2.89	4.49	
Weight (kg)		0.27	0.48	0.74	
Electrical Spec	Coil Rated Voltage	110, 240V AC (50/60Hz); 12, 24V DC			
	Allowable Voltage Fluctuation	-15% to +10% of rated voltage			
	Coil Insulation Type	Type B equivalent (130°C)			
	Apparent Power AC (Power Consumption)	Inrush	5.6VA (50Hz)		
		Holding	3.4VA (2.1W)/50Hz		
	Power Consumption DC	1.8W			
Electrical Connector	DIN 43650 (industrial form)				
Semi-Standard Spec	With indicator light and surge voltage suppressor				
Pilot Valve Manual Override		Non-locking push type			

*Use dry air when temperature is low.

HOW TO ORDER SOFT START-UP VALVE



SEE INSIDE FRONT COVER FOR
DETAILS OF YOUR LOCAL SALES OFFICE



DIMENSIONS
SEE NEXT PAGE

FOR FURTHER TECHNICAL
DETAILS ON THIS
PRODUCT REQUEST
CATALOG REFERENCE
ESG & N5-G1